

Rock & Gem

Volume 36, Number 5

May 2006

FEATURES

The Frugal Collector: More Sulfates

Part I: Linarite, ettringite, creedite, cyanotrinite, and brochantite

by Bob Jones

The Sterling Hill Mine and Museum

Saving an important old mine

by Bob Jones

Roadside Panning Sites in Texas

Part IV: Madison, McMullen, Mason, Maverick, Montgomery, Moore, Newton, and Polk counties

by David and Clois Walker

Rock & Gem Kids

How to pack minerals, Kauai calcite

by Steve Decker

Rock & Gem in Rock Shops

Where to find your favorite rockhounding magazine

The Rock That Burns

Colorado oil shale is a collectible energy source

by Steve Voynick

Phenomenal Phantom Quartz

A new find is made at Diamond Hill, South Carolina

by Richard J. Jacquot

Cobalt: A Northern Treasure Map

The Ontario town with a silver lining

by Michael Gordon

12

20

34

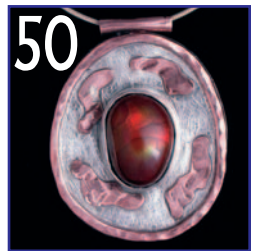
46

58

64

72

80



FIELD TRIPS

The Sheffler Geode Mine

28

New diggings produce calcite geodes

by Robert Beard

Florissant Fossil Hunt

40

Colorado shales reveal a snapshot of Eocene flora

by Lori Lamb

PROJECT

Make an Analogous Agate Pendant

50

Copper metal complements a reddish stone

by Diane Prokop

REGULAR COLUMNS

Craftsman of the Month ..6	Off the Dop76
Show Dates8	Subscriber Service
Shop Talk.....18	Information76
Picks & Pans26	Many Facets78
Rock Science62	On the Rocks88

Miller
Magazines, Inc.

Rock & Gem (ISSN 0048-8453, USPS 486-290) is published monthly by Miller Magazines, Inc., 290 Maple Ct., Ste. 232, Ventura, California 93003-3517, telephone (805) 644-3824. Periodicals postage paid at Ventura, CA 93006, and additional mailing offices. Single-copy price \$4.99. Subscription in U.S.A. and possessions: 1 year (12 issues) for \$24.00; 2 years for \$42.00; 3 years for \$54.00. Add \$15.00 per year postage for Canada and all other foreign countries. Submission of articles and photos by our readers is welcome, but we can accept no responsibility for loss or damage to unsolicited editorial contributions. Copyright 2006 by Miller Magazines, Inc.

Printed in U.S.A.

Notice: On rare occasions, typographical errors occur in prices listed in magazine advertisements. For this reason, advertisements appearing in *Rock & Gem* should be considered as requests to inquire, rather than as unconditional offers to sell. All prices are subject to change without notice.

POSTMASTER: Send address changes to
Rock & Gem,
P.O. Box 469113, Escondido, CA 92046-9113
or RockAndGem@pcspublish.com

ON THE COVER

This crystal of the collectible sulfite linarite is from the Copper Queen Mine in Inyo County, California, and resides in the California State Mining and Mineral Museum. (Photo by Jeff Scovil)

SUBSCRIPTION QUESTIONS? Call (760) 291-1549

BOB JONES Senior Consulting Editor; **LYNN VARON** Managing Editor; **MARY ROBERTSON** Art Director; **CARRIE MEADOWS-HARTMANN** Graphic Designer; **JOE HOWARD** Graphic Artist; **DANA GURNEE** Production Assistant; **ROBERT BEARD, STEVE DECKER, WILLIAM A. KAPPELE, JIM PERKINS, DIANE PROKOP, KENNETH H. ROHN, STEVE VOYNICK** Contributing Editors; **BRIAN ROBERTS** Advertising Director; **MARLENA COLLIER-MIGACZ** Classified Advertising Manager; **CELESTE WEINGARDT** Advertising Production Manager; **DRAY BANKS** Advertising Production; **RAMONA HARVEY** Circulation Manager; **JEFF SHOOP** Publisher

EDITORIAL SUBMISSIONS:

Lynn Varon / *Rock & Gem*
290 Maple Ct., Suite 232, Ventura, CA 93003
(805) 644-3824 ext. 29
e-mail: editor@rockngem.com

ADVERTISING INQUIRIES:

Brian Roberts / *Rock & Gem*
11288 S. Indian Wells Dr., Goodyear, AZ 85338
(623) 327-3525 phone/fax
e-mail: brian@millerlags.com